

Moving NM images around. Version 7-2008 v1

J. Wallis

The current version of this document may be found on the Nucmed G drive in nucmed/helpful hints

Files stay on the general nukes computers for 1 month (but only 6 days if reloaded)

Files stay on the cardiac nukes computers for 2 weeks (but only 1 week if reloaded)

Files stay on clindesk indefinitely (but may need to be retrieved)

Gathering Static images:

From clindesk

Bring up the image in clindesk

Press the “a” key to hide annotations

Either capture using snagit, or from the file menu -> save as JPG

(snagit allows you to crop the image during capture)

From the clinical nucs computers (general instructions using exceed)

Log into a PC as yourself, since exceed works only if logged in as a member of the NM division

Make sure screen is set to 1280x1024. (This is always true for flat screen PCs)

On the desktop, open the folder “Exceed 10 network”

Make that no other exceed windows are open.

Double-click the startup file you wish to use

- Clinical alpha south

- Clinical alpha north

- Kids alpha

A window with the clinical menu should appear.

Start the program you wish to use, such as the #6 program. (If it quits immediately, you have another exceed window open)

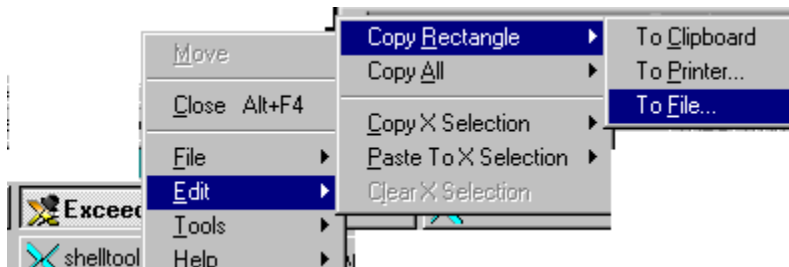
Open the desired patient, and display the image you want to capture.

Perform a screen capture using snagit.

Optional:

If snagit is not loaded on your machine, you can capture from within exceed as follows:

To capture the image, go to the very bottom of the computer screen, right click on exceed in the task bar, and go to edit->copy rectangle-> to file



(You can alternately use the “copy rectangle to file” icon in the exceed palette, if it is visible)

The cursor will change to a small camera icon – use it to click and drag over the desired portion of the image

When saved on disk, it is a bmp file.

From the cardiac computers (using exceed)

(Check imageweb first to see if the file you want is there, rather than using the instructions below)

Make sure your file is loaded on the cardiac computer.

Make sure that no other exceed windows are open.

Follow general exceed instructions above, but click on BJH-Autoquant.

In the small blue window, click on “use patient selection”

Click on your desired patient and press “proceed”

Click on the file that starts with “--” and click “proceed”

When the new window fails to open, go the taskbar, right click on the icon for “patient database”, and select “close”. Say OK to the next warning dialog box.

Your cardiac window should appear. Capture files as per the general Exceed instructions.

From PET-CT fusion station

(Check imageweb first to see if the file you want is there, rather than using the instructions below)

To grab a screen capture while at the esoft 5.5 workstation

From the Flexible Display menu, choose “save page as”

For the location, navigate to the H (nucmed G) drive.

You may be asked to login – if so, the format is MIR\jwalli01

(use your fellow or staff NT username and password)

You can have your own folder here on the G drive

The file will be in BMP format, within the PET-CT folder on the G drive

Optionally use them in powerpoint

Within powerpoint, use “insert-> picture -> from file” in the menu, and find your bmp, jpg, or gif file.

For New TF, save images in JPEG (jpg) format, and upload using the new TF web site at <http://mirtf>

Gathering Cine Images

(cine images can be used the TF, as either as AVI or animated GIF files.

Simple and quick is to use snagit – see instructions below. Other methods will yield slightly higher image quality, but the snagit method will suffice for most purposes. For PET-CT, best (and simplest) is to save the AVI file from the esoft pet workstation directly. Details below for all methods.

Using snagit

One-time settings

Snagit:

First- a few one-time settings that will save on this computer (for this user) only.

Open snagit, and under view, select “Classic View”.

Confirm the choice (you can always switch back later)

Click on video capture on the main snagit screen

Under input -> properties -> options-> Video capture preferences, change the temporary directory to C:\temp\

This is where temp files are stored during conversion to avi format)

Under input, select Region

Under output -> properties -> video, uncheck auto-configure, and enter 8 frames per second. Then click video setup, and under compressor, choose Cinepak. Set compression quality to 100. Click OK, Apply, OK.

Now you are ready to capture.
When doing the capture:

Launch snagit

Click on the video capture icon on the left.

Click the red capture button.

Drag the region that you want to capture.

Wait for the beginning of the cine loop starts, then click start.

Wait until exactly one cine loop is complete.

Press control-shift-P to stop, and then click Stop.

Click Finish, and save your file

From PET-CT in esoft 5.5 or later

Right click on a cine, at the bottom of the cine where the frame indicator line is scrolling.
Choose "Save cine as avi".

For the location, navigate to the H (nucmed G) drive. Make sure your filename ends in .avi

You may be asked to login – if so, the format is MIR\jwalli01
(use your fellow or staff NT username and password)

You can have your own folder here on the G drive

The file will be in avi format, within the PET-CT folder on the G drive

To decrease the size of the PET avi file (from about 9 megs to 0.3 megs):

Use Quicktime Pro on the left-hand PC in the fellows room.

Drag your avi file onto the quicktime icon on the desktop on the left-hand PC in the fellows room.

The movie will open in quicktime.

From the File menu, choose Export.

Then choose Export to AVI.

From options -> settings, set the compressor to Cinepak , 256 gray, best quality

Accept these settings, and complete exporting of your file.

To make an AVI file smaller

The easiest way is to use Quicktime Pro, which is installed on the left-hand PC in the residents room. If you want it for your PC it is a \$30 purchase from Apple.

Drag your AVI file onto the Quicktime Icon, which is on the desktop

Choose Export from the file menu.

Set "Export" to "Movie to AVI"

In Options, make the upper settings are set to Cinepak, 256 grays, Best quality.

In the lower settings, uncheck "limit data rate", and set the key frame to every 8 frames

(it will remember these settings, which give about 20-fold compression)

Enter your new filename/location and click "save"

Creating Cine AVI files from nukes images (for the brave)

You probably should just bring up the cine on a PC in exceed, have it run slowly, and then use snagit to capture it. The instructions below are much more laborious, but will result in a higher quality capture (eg, for a national conference).

Fully identify the file on the nuclear medicine computer (either at nukes computer or using exceed)

Bring up the file in the #6 general program, and display your file

Choose utilities -> header information

On the left, write down the full filename (eg, smithj.x05), the image size (128x128) and # images.

Click cancel, and quit this program.

Get the file

Go to a PC, and in the Start Menu, choose Command Prompt.

Type `ftp ip-address`, choosing the ip-address from the table below

If at any MIR PC	To get to	Enter this ip-address
	South	10.33.15.47
	North	10.35.127.20
	Childrens(?)	10.34.113.121

Enter the username (clinical) and password

Type `binary` to switch to binary transfer mode

Type `ls filename` to confirm your file is present

Type `get filename` to pull your file to the pc (can do this more than once if more files)

Type `quit`

Type `exit`

Your file is now on your H drive.

Open the file in ImageJ to convert to an AVI

Launch ImageJ (likely found at the bottom of the start -> programs menu)

From the file menu, choose Import -> Raw

Choose your file

A box like the one at the right will appear.

Set image type = 16-bit unsigned,
offset to first image = 2048, check little-endian byte order

Enter the actual image dimensions in to width and height, and enter the number of images.

If you want a white background, check "white is zero"

Choose Image -> Rotate -> Flip vertically

Optionally adjust brightness with Image -> adjust -> brightness/contrast

To save as a AVI file, choose File -> SaveAs -> AVI. Explicitly include the avi extension on the filename (xxxx .avi) when saving.

